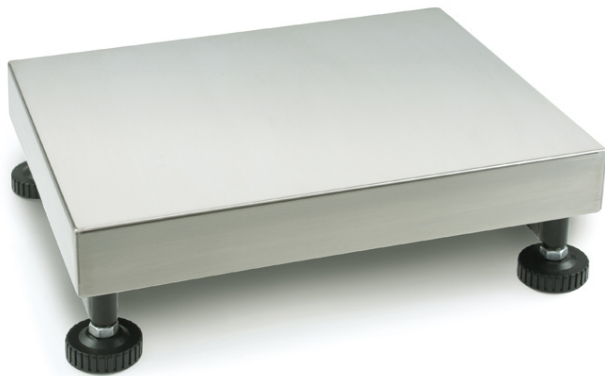


# KERN KFP 60V20LM

Platform: weighing plate of stainless steel, painted steel base, silicone-coated aluminium load cell with protection against dust and water splashes IP65



## Packing & Shipping

Readability force [d] (N)	1 d
Dimensions packaging (W×D×H)	930×550×210 mm
Net weight	9,8 kg
Shipping method	Parcel service
Net weight approx.	10 kg
Gross weight approx.	16 kg
Shipping weight	21,5 kg

## Services (optional)

Article number for conformity assessment	965-229
Article number for DAkkS calibration	963-129

## Pictograms

### STANDARD



### FACTORY



## Category

Brand	KERN
Product category	Component
Product group	Platform
Product family	KFP-V20-IP65

## Measuring System

Weighing capacity [Max]	30 kg; 60 kg
Readability [d]	2 g
Minimum weight [Min]	200 g; 400 g
Loadcell type	aluminium IP65 silicone-coated
Load cell connection	6-wire
Load cell OIML class	C3

## Approval

Verification scale interval [e]	10 g; 20 g
Conformity assessment possible ex works	✓

## Construction

Dimensions weighing platform (W×D×H)	500×400×127 mm
Material weighing plate	stainless steel
Material platform	steel, powder-coated
Dimensions weighing surface (W×D)	500×400 mm
Cable length	2,5 m
Allowed cable length display device [Max]	3 m
Material load cell(s)	aluminium
Load cells - number	1
Levelling feet adjustable	✓

## Functions

IP protection - load cell	IP65
---------------------------	------